

670nm 1W TO Can Laser Diode| High Power Red LD with TO3 Package

660nm~670nm 1W Laser Diode | TO3 Package LD | FAC Optional

WSLD-670-001-3

Wavespectrum Laser Group

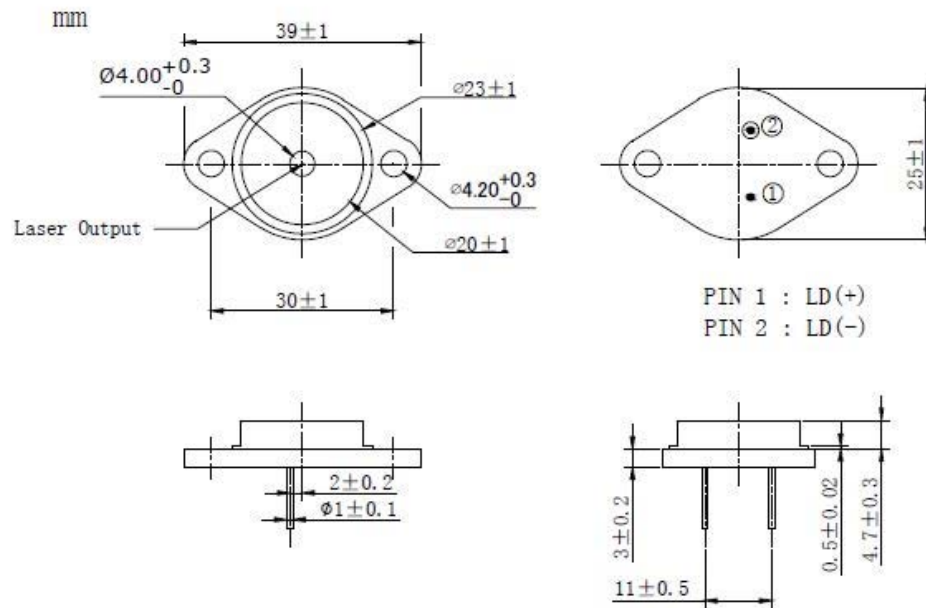
www.wavespectrum-laser.com

en.wavespectrum-laser.com.cn

670nm Laser Diode		1W/TO3	en.wavespectrum-laser.com.cn	
PARAMETER	SYMBOL	VALUE	UNIT	
Reverse Voltage	V _r	2.0	V	
Operating Temperature	T _{op}	+10~+30	°C	
Storage Temperature	T _{stg}	-20~+80	°C	
Lead soldering temperature (10 sec.)	T _{is}	260	°C	
Features: <ul style="list-style-type: none">670nmHigh Power ,CW, Multi-modeHigh QualityTO3 Package				
Applications: <ul style="list-style-type: none">Medical Laser treatmentLaser IndicatorLaser Detector				
Specifications		WSLD-670-001-3		
		Min	Type	Max
Center Wavelength@25℃		670nm±10nm		
Spectral Width (FWHM)			2nm	
Output Power			1W	
Emitter Area			100x1μm	
Beam Divergence (FWHM)			35°⊥ x 8°//	
Temperature Coefficient of Wavelength			0.2nm / °C	
Slope Efficiency			1.1W/A	
Threshold Current (Typ.)			0.5A	
Operating Current (Typ.)			1.5A	
Operating Voltage			2.4V	
Package Style		TO3		



T03 Package View



**Electrically shorten LD module and store in non-extreme conditions.
Suggest using the constant current power supply.**

