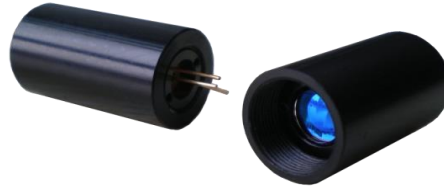


## Collimated Laser Diode

### PRODUCT FEATURE

405nm~1650nm  
 Single mode and Multi-mode Beam Output  
 5mW~5W Output Power  
 Compact Package  
 Built-in Photodiode Optional  
 Long Lifetime  
 High Stability



### PRODUCT OVERVIEW

Collimated Laser Diode is the competitive product of WAVESPECTRUM.

We offer the high quality Collimated Laser Diode with Single mode and Multi-mode Beam. The wavelength ranges from 405nm to 1650nm and the output power is from 5mW to 5W. The Photodiode is an option for customers. Meanwhile, with the Aspheric lens, the collimated Laser Diode has a small divergence and perfect beam quality.

To ensure the long-term reliability, each Collimated laser diode will undergo rigorous testing and aging in factory. Meanwhile the high-low storage temperature circulation is also necessary for each laser diode. We set the storage temperature range from -40°C to +85°C, and it lasts 10 cycles, which will ensure the long-term Stability of Collimated Laser Diode.



Wavelength	Part Number	Output Power	Mode Type	Photodiodes	Beam Divergence
405nm	WSLM-405-150m-K	150mW	Single Mode	×	≤1mrad
	WSLM-405-200m-K	200mW	Single Mode	×	≤1mrad
	WSLM-405-250m-K	250mW	Single Mode	×	≤1mrad
445nm	WSLM-445-050m-K	50mW	Single Mode	×	≤1mrad
	WSLM-445-080m-K	80mW	Single Mode	×	≤1mrad
488nm	WSLM-488-040m-K	40mW	Single Mode	×	≤1mrad
505nm	WSLM-505-050m-K	50mW	Single Mode	×	≤1mrad
520nm	WSLM-520-050m-K	50mW	Single Mode	×	≤1mrad
635nm	WSLM-635-010m-K	10mW	Single Mode	√	≤1mrad
	WSLM-635-040m-K	40mW	Single Mode	√	≤1mrad
	WSLM-635-150m-K	150mW	Single Mode	×	≤1mrad
	WSLM-635-500m-K	500mW	Multi-mode	×	≤10mrad
	WSLM-635-001-K	1W	Multi-mode	×	≤10mrad
658nm	WSLM-650-040m-K	40mW	Single Mode	√	≤1mrad
	WSLM-650-100m-K	100mW	Single Mode	×	≤1mrad
	WSLM-650-150m-K	150mW	Single Mode	×	≤1mrad
670nm	WSLM-670-010m-K	10mW	Single Mode	√	≤1mrad
685nm	WSLM-685-030m-K	30mW	Single Mode	√	≤1mrad
	WSLM-685-050m-K	50mW	Single Mode	√	≤1mrad
785nm	WSLM-785-015m-K	15mW	Single Mode	√	≤1mrad
	WSLM-785-050m-K	50mW	Single Mode	√	≤1mrad
	WSLM-785-080m-K	80mW	Single Mode	√	≤1mrad
808nm	WSLM-808-050m-K	50mW	Single Mode	√	≤1mrad
	WSLM-808-100m-K	100mW	Single Mode	√	≤1mrad
	WSLM-808-800m-K	800mW	Multi Mode	○	≤10mrad
830nm	WSLM-830-150m-K	150mW	Single Mode	√	≤1mrad
	WSLM-830-200m-K	200mW	Single Mode	√	≤1mrad
	WSLM-830-800m-K	800mW	Multimode	○	≤10mrad
850nm	WSLM-850-030m-K	30mW	Single Mode	√	≤1mrad
	WSLM-850-150m-K	150mW	Single Mode	√	≤1mrad
860nm	WSLM-860-800m-K	800mW	Multimode	○	≤10mrad
880nm	WSLM-880-005m-K	5mW	Single Mode	√	≤1mrad
905nm	WSLM-905-080m-K	80mW	Single Mode	√	≤1mrad
940nm	WSLM-940-150m-K	150mW	Single Mode	√	≤1mrad
	WSLM-940-800m-K	800mW	Multimode	○	≤10mrad
980nm	WSLM-980-030m-K	30mW	Single Mode	√	≤1mrad
	WSLM-980-080m-K	80mW	Single Mode	√	≤1mrad
	WSLM-980-800m-K	800mW	Multimode	○	≤10mrad
1064nm	WSLM-1064-040m-K	40mW	Single Mode	√	≤1mrad
	WSLM-1064-100m-K	100mW	Single Mode	√	≤1mrad

Note: √:Yes, ○:Optional, ×:No.

Wavelength	Part Number	Output Power	Mode Type	Photodiodes	Beam Divergence
1064nm	WSLM-1064-150m-K	150mW	Single Mode	√	≤1mrad
1310nm	WSLM-1310-015m-K	15mW	Single Mode	√	≤1mrad
	WSLM-1310-020m-K	20mW	Single Mode	√	≤1mrad
1550nm	WSLM-1550-010m-K	10mW	Single Mode	√	≤1mrad
	WSLM-1550-015m-K	15mW	Single Mode	√	≤1mrad

Note: √:Yes, ○:Optional, ×:No.

Package View :

