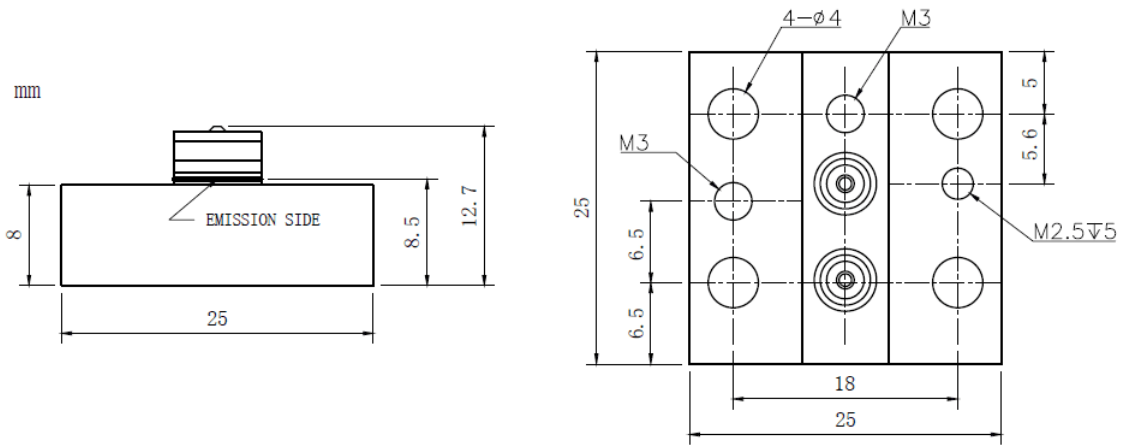


**808nm~810nm 40W CS-mount Laser Diode Bar | Hard Solder Conduction Cooled Package Diode Laser Bar**  
**808nm 40W |Laser Array| Hair Removal| Skin Whitening| Laser Pumping| High Power CS-mount Single Bar**  
**WSLBR-808-40-CS                      Wavespectrum Laser Group                      www.wavespectrum-laser.com.cn**

808nm Laser Diode Bar    40W		Wavespectrum Laser Group	
PARAMETER	SYMBOL	VALUE	UNIT
Reverse Voltage	$V_r$	2.0	V
Operating Temperature	$T_{op}$	+15~+25	°C
Storage Temperature	$T_{stg}$	-20~+85	°C
Lead soldering temperature (10 sec.)	$T_{is}$	260	°C
<b>Features:</b> <ul style="list-style-type: none"> <li>● 808nm</li> <li>● Laser Diode Bar</li> <li>● CW Mode</li> <li>● CS-mount</li> <li>● Hard Solder Conduction Cooled Package</li> </ul>			
<b>Applications:</b> <ul style="list-style-type: none"> <li>● Medical Laser Treatment</li> <li>● Laser Pumping</li> <li>● Others</li> </ul>			
Specifications	WSLBR-808-40-CS		
	Min	Type	Max
Center Wavelength@25°C	----	808±3nm	----
Spectral Width (FWHM)		3nm	
Output Power	----	40W	----
Emitter Number		19	
Emitter Size		10mm	
Beam Divergence (FWHM)	----	35° <sub>⊥</sub> x 10° <sub>//</sub>	----
Temperature Coefficient of Wavelength	----	0.3nm / °C	----
Threshold Current (Typ.)	----	8A	10A
Operating Current (Typ.)	----	40A	45A
Operating Voltage	----	1.9V	2.0V
Slope Efficiency	1.2W/A	----	----
Power Conversion Efficiency		48%	
Package Style	CS-mount		
Recommended Operating Temperature	20°C		



CS-mount Package View



Electrically shorten LD module and store in non-extreme conditions.

Suggest using the constant current power supply.

